

KMAC TRIENNIAL

CROWN OF RAYS

Contemporary Art
of the Commonwealth

August 24 -
December 1, 2019



**Educator
Guide**

KMAC MUSEUM

WELCOME!

Dear Educators,

KMAC is excited to bring the artworks and artists from KMAC's first Triennial, **Crown of Rays: Contemporary Art of the Commonwealth** to your students. This field trip guide is intended to help you prepare for your visit to KMAC and begin conversations of key themes and ideas in your classroom. Through discussion, reflection, and art creation, our goal is to have the artistic process come alive for your students. While touring the exhibition we will look at select artworks to engage students in thinking and analyzing ideas and issues facing our community today. You will see contemporary artists using a variety of materials and processes to create big ideas. To further cement the connection between responding, creating, and producing, we have also developed an art-making experience that corresponds with the exhibition.

Enjoy your visit!
Joanna Miller
Director of Education

CONTENTS

Introduction	p 4
Pre Visit Activity	p 5
Philis Alvic, <i>City Windows</i>	p 6
Rachel Frank, <i>Offerings</i>	p 7
Vocabulary, Learning Targets, & Literature Connection	p 8
Internet Resources, Art Standards	p 9
Hands-on Art Workshop	p 9
Post Visit Activity	p 10-11

COVER IMAGE: *Full Circle*, 2019, Mary Carothers; porcelain, salt, quartz, antlers, branches. Courtesy of the artist.

INTRODUCTION

Crown of Rays

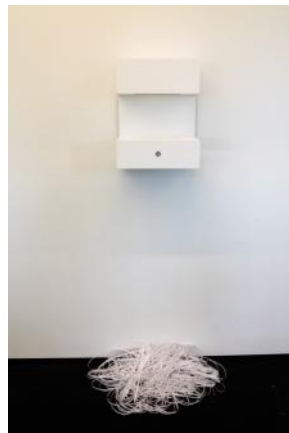
In 1926, Kentucky lawmakers chose the goldenrod as the official state flower. From lush farms and meadows to polluted cities and towns, this plant flourishes and adds beauty to our landscape. The **Crown of Rays** is one of over 100 types of goldenrod. It's name symbolizes power, beauty, love, and wisdom. The artists in this exhibition, like this adaptable plant, represent the diversity and brilliance of Kentucky. These artists also shine a light on the many issues facing individuals and communities of Kentucky. Environmental, political, and personal difficulties and triumphs can be seen through sculpture, painting, video, textiles, audio, and much more.

20 artists were chosen by a committee of art professionals from over 200 submitted portfolios to be represented in KMAC's first **Triennial**. Every three years, KMAC will ask for submissions from artists that represent the contemporary art of the commonwealth. This year's exhibition brings together artists from varied backgrounds and art practices that reflect the culture of the region and takes us out of our borders into the larger world.



above:
Crosscut, 2019, Bette Levy;
hand crochet, nylon cord, powertex, two
person crosscut. Courtesy of PYRO Gallery.

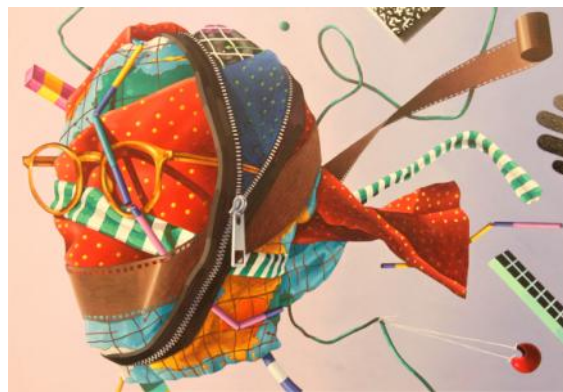
below:
*I'm Sorry We are Meeting Under These
Circumstances*, 2019, Andrew Cozzens; mixed
media. Courtesy of the artist.



SYMBOLS

Pre Visit Activity

Lexington-based artist, John Harlan Norris, fell in love with still life painting in art school. Painting objects and using them as symbols has become an important part of his art practice. In his most recent work, Norris creates portraits that mask a person's features. He uses colors, space, symbols, and movement to illustrate the person instead. Objects and symbols play a big role creating the different **personas** that we show the world. Think about how you would create a portrait of yourself using symbols, colors and shapes. Use the space below or create your own self-portrait.



left to right:
Opposite, 2019, John Harlan Norris; oil, acrylic, sand on canvas.
Narrator, 2019; oil, acrylic, sand on canvas.
Courtesy of the artist.



PHILIS ALVIC

City Windows



ABOUT THE ARTIST

- Grew up in Chicago, but has lived in Kentucky since 1976
- Been a part of over 300 exhibitions
- Writes articles on craft, weaving, and art history for different magazines
- Helps craft programs in Africa, South America, and Asia

left:

City Windows, 2012, Philis Alvic; hand-woven elements on cotton, synthetic yarns. Courtesy of the artist.

After forty years of weaving, Philis Alvic continues to challenge herself to create and share new techniques and ideas. She uses her loom to work out ideas that she sees in the world around her and within her self. Alvic's current work not only shows off complex weaving **patterns** but also the three-dimensionality of **textiles**. *City Windows* is a part of her current series called *Portals*, where she **drapes** woven panels in different ways to suggest windows and doors. *City Windows* pulls the viewer in with its rich colors and changing patterns and then asks them to stay and wonder. Are you looking in or out? Should you go through the **portal** or stay on your own side? While displaying her vast knowledge of the tradition of weaving, Alvic is also able to share her ideas about journeys, transformation, and change.

Discussion Questions

- How has Alvic used lines, shapes, and color to create patterns?
What do windows and doors symbolize for you?

RACHEL FRANK

Offerings



ABOUT THE ARTIST

- Lives in New York and grew up in Kentucky
- Uses sculpture, performance art, and video
- Creates and wears large animal masks for performances

left to right:

Pattern for a Yurt III, 2016, Rachel Frank; fabric, thread, brass grommets, glass beads. *Indicator Lichen and Fungus Lekythos with Offering Cups*, 2019; stoneware ceramic with glazes. Courtesy of the artist

Rachel Frank grew up near the birthplace of American paleontology, Big Bone Lick, Kentucky. It was the location of the first mammoth fossil find and confirmation of a species extinction. Inspired by this history, Frank explores natural history and the human impact and connection with nature in her art. She researched her local environment and also how people throughout history have interacted with their environments. This can be seen in Frank's **ceramic** sculptures that combine Kentucky indicator-species (plants and animals that show changes in their environment's condition) and ancient Greek offering **vessels**. Fungi, a turtle shell, and milk snake branch off into bowls and cups, transforming into ceremonial objects. Her beaded **tapestry** hangs behind these vessels, illustrating a diagram of a human dwelling place that can become a movable part of the environment. Frank's artwork shows the viewer problems facing the natural world and also offers sustainable options and solutions.

Discussion Questions

What do you think are some problems facing our planet?
How can science and art work together?

VOCABULARY

Triennial: happening every three years

Symbol: an action, object, picture, or event that represents a particular idea or thing

Performance Art: an art form that combines visual art and physical action

Textile: related to cloth, fabric, or woven material

Installation: a work of art made from several parts that is built or put together in a large space

Ceramics: made of clay and hardened by heat

Vessel: a hollow container like a bowl or cup

Immigration: moving to a new country with plans to be there permanently

Environment: physical surroundings that are living and non-living

LEARNING TARGETS

- I can describe elements of art and principles of design.
- I can identify meaning in visual artworks.
- I can share personal knowledge and meaningful experiences while looking at and making art.
- I can demonstrate skill in sculpting.
- I can create a hand-built vessel.

READING CONNECTION

FOR YOUNGER STUDENTS

The Extinct Alphabet Book by Jerry Pallotta

The Promise by Nicola Davies

The Wall in the Middle of the Book by Jon Agee

A Different Pond by Bao Phi

What's the Big Idea?: Activities and Adventures in Abstract Art by Joyce Raimondo

FOR OLDER STUDENTS

A Wild Child's Guide to Endangered Animals by Millie Marotta

The End of the Wild by Nicole Helget

Shooting Kabul by N.H. Senzai

Inside Out and Back Again by Thanhha Lai

The Art Book: Big Ideas Simply Explained by DK

INTERNET RESOURCES

kmacmuseum.org
Lorilarusso.com
Rachelfrank.com
Sarahlasley.com
Philisalvic.info
Johnharlannorris.com

jimmyangelina.com
kentuckianasounds.org
andrewcozzens.com
caseyjameswilson.com
sean-starowitz.com
hunterstampssculpture.com

viansora.com
elizabethmesa-gaido.com
melissavandenberg.com
ruckuslouisville.com
under-main.com

STANDARDS

Content standards addressed in this tour and art-making activity

KY DEPARTMENT OF EDUCATION FOR MEDIA ARTS

Anchor 1: Generate and conceptualize artistic ideas and work

Anchor 2: Organize and develop artistic ideas and work

Anchor 3: Refine and complete artistic work

Anchor 5: Develop and refine artistic technique and work for presentation

Anchor 7: Perceive and analyze artistic work

Anchor 8: Interpret intent and meaning in artistic work

Anchor 9: Apply criteria to evaluate artistic work

Anchor 10: Synthesize and relate knowledge and personal experiences to make art

Anchor 11: Relate artistic ideas and works with societal, cultural, and historical context

KY DEPARTMENT OF EDUCATION FOR ENGLISH LANGUAGE ARTS

SL.K-12.1 Participate in conversations with others and express ideas

SL.K-12.2 Integrate and evaluate information from diverse media

W.K-12.1 Write arguments based on visual evidence

KY DEPARTMENT OF EDUCATION FOR SCIENCE

ESS3.A Natural Resources

ESS3.C Human Impacts on Earth Systems

LS2.C Ecosystem Dynamics, Functioning, and Resilience

KY DEPARTMENT OF EDUCATION FOR SOCIAL STUDIES

K.G.HE.1; K.G.KGE.1; K.H.CH.1; k.H.CH.2; 1.I.Q.1; 1.G.HI.1; 2.G.HE.1; 3.I.Q.1; 3.G.HE.1; 4.I.Q.1; HS.G.HI.1; HS.G.HE.1

HANDS-ON ART

Ancient Greek Offering Vessels in Clay

Students will learn about different ancient Greek offering vessels, specifically the kemos. The kemos style of pottery ring and cups is the basis of one of Rachel Franks' pieces in the exhibition. Students will learn about clay techniques, tools, and processes. Students will sculpt their own kemos, decorate it, and discuss how it can be applied in their own lives today.

WHAT DID YOU SEE?

Post Visit Activity

Write the title of three works you remember and then answer the following questions thoughtfully.

	Title #1	Title #2	Title #3
Describe the artwork. Try to use words related to the elements of art (line, shape, form, space, color, value, texture).			
What materials and processes did the artist use? How did the materials effect the way you understood the artwork?			
What is the Big Idea? Describe a theme or a story you found in the artwork.			
Describe your reaction to the work. What did the art remind you of?			

CONNECTIONS

Post Visit Activity

Many of the artist in the KMAC Triennial have made art about issues facing our communities in Kentucky and, often, the world. These are topics that they are passionate about and want to share with others. Think about problems or questions that you are dealing with personally or that you see affecting your community or school. Can you write an essay, a poem, or draw an image that could get people talking about one of those issues?